



### 吉派流体控制技术（上海）有限公司

地址：上海市奉贤区南桥镇望园南路1121号泽天产业园3号楼  
电话：021-33656178 / 021-33656176

### GPTECH FLUID CONTROL TECHNOLOGY (SHANGHAI) CO., LTD

Address: Building 3, Zetian Industrial Park, No. 1121, Wangyuan South Road, Nanqiao Town, Fengxian District, Shanghai  
Tel: 021-33656178 / 021-33656176

### 吉派流体控制技术（江苏）有限公司

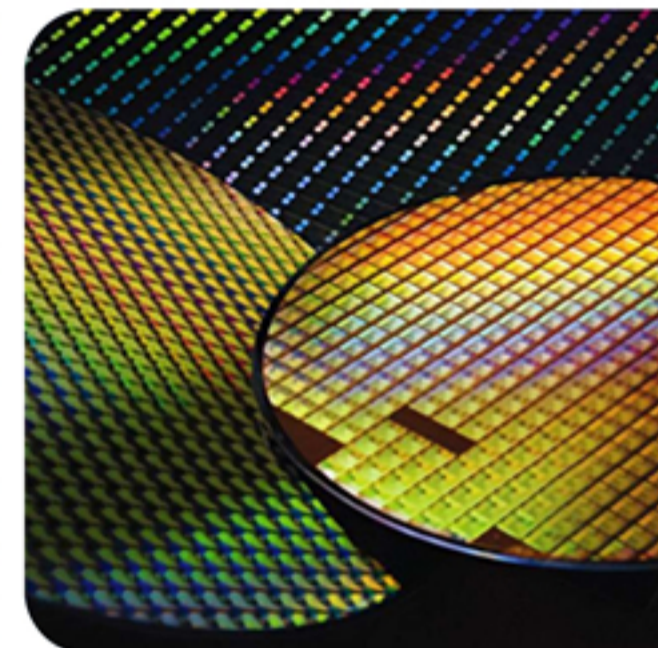
地址：江苏省太仓市沙溪镇大木桥路397号  
电话：0512-53218188 / 0512-53218288

### GPTECH FLUID CONTROL TECHNOLOGY (JIANGSU) CO., LTD

Address: No. 397, Damuqiao Road, Shaxi Town, Taicang City, Jiangsu Province  
Tel: 0512-53218188/0512-53218288

### GPTECH USA

Address: 900W TEMPLE STREET LOS ANGELESS CA 90012



吉派流体控制技术（上海）有限公司

GPTECH FLUID CONTROL TECHNOLOGY (SHANGHAI) CO., LTD

## 超高纯化学品输送设备

ULTRA HIGH PURITY CHEMICAL CONVEYING EQUIPMENT

PFA塑料为少量全氟丙基全氟乙烯基醚与聚四氟乙烯的共聚物,适于制作耐腐蚀件,减磨耐磨件、密封件、绝缘件和医疗器械零件,高温电线、电缆绝缘层,防腐设备、密封材料、泵阀衬套,和化学容器,我们主要应用在超高纯化学品输送设备方面,其主要包含化学品输送设备,尾气回收处理设备,实验室供气系统,制药流体输送系统,各类超高纯含氟聚合物管件,接头,阀门等。

PFA plastic is a copolymer of a small amount of perfluoropropyl perfluoroethylene ether and polytetrafluoroethylene. It is suitable for making corrosion-resistant parts, anti-wear parts, seals, insulating parts, medical device parts, high-temperature wire and cable insulation, anti-corrosion equipment, sealing materials, pump valve bushings, and chemical containers. We are mainly used in ultra-high purity chemical transmission equipment, which mainly includes chemical transmission equipment, tail gas recovery and treatment equipment, Laboratory gas supply system, pharmaceutical fluid delivery system, various ultra-high purity fluoropolymer pipe fittings, joints, valves, etc.



原材料方面,我们和日本大金、美国杜邦公司、3M中国均达成合作,为GPTECH提供高纯等级的PFA原材,其特点是氟离子和颗粒物析出较少,具有优秀的耐热性、耐弯折性、耐开裂性,耐化学性、透光率高、高温下的机械强度优异,适用于挤出成型品、传递成型品等,在半导体行业,精细化工,生物制药等领域得到广泛应用。

In terms of raw materials, we have reached cooperation with Daikin of Japan, DuPont of the United States and 3M China to provide gptech with high-purity PFA raw materials, which are characterized by less precipitation of fluorine ions and particles, excellent heat resistance, bending resistance, cracking resistance, chemical resistance, high light transmittance and excellent mechanical strength under high temperature. They are suitable for extrusion molding products and transfer molding products. In the semiconductor industry, fine chemicals, It is widely used in biopharmaceutical and other fields.



以上为日本大金工业株式会社所注册商标



以上为美国杜邦公司所注册商标



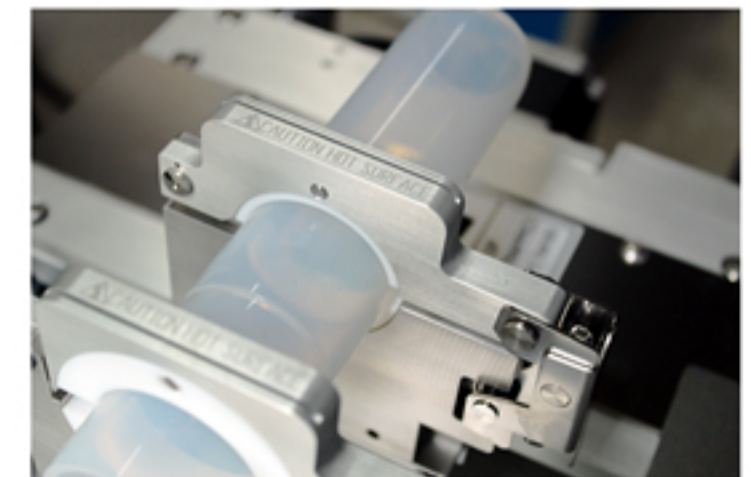
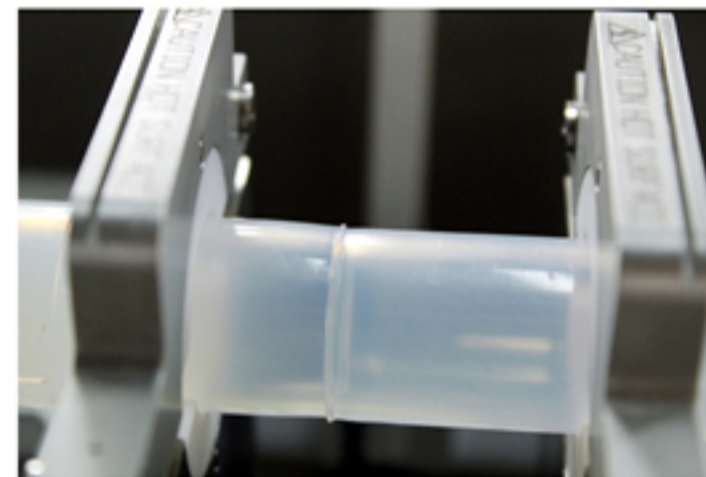
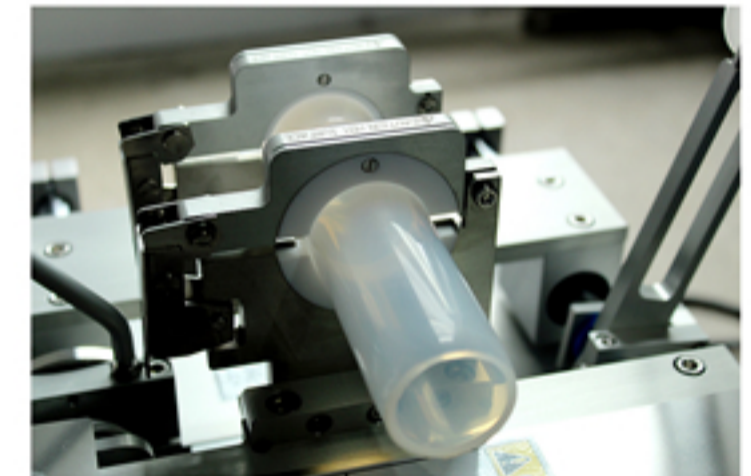
以上为美国3M公司所注册商标

## 高科技的生产设备

HIGH TECH PRODUCTION EQUIPMENT

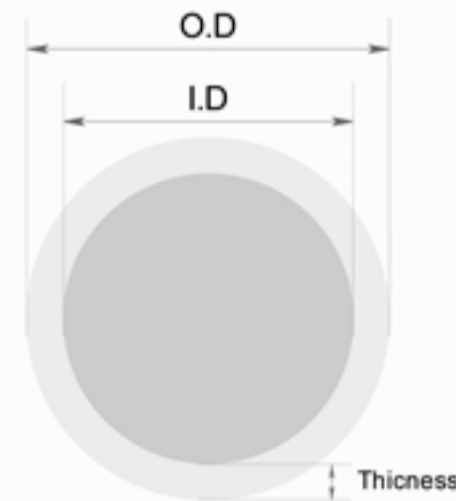
生产设备方面,吉派引进了日本精密生产线,在100级和1000级无尘车间内加工生产,确保材质的洁净等级,以此实现高稳定性和高作业效率的工作,确保产能无忧。排气挤出机的ST专用螺杆流道设计则能够提高成品的稳定性和良品率。而在PFA管件系列产品的焊接方面,我们采用的是日本最新技术的PFA焊接机,在焊接端面的熔化深度和左右端面的融化平衡上有着业内领先的优势,以热辐射技术让端面完美粘结。

In terms of production equipment, jipai has introduced Japanese precision production lines to process and produce in class 100 and 1000 dust-free workshops to ensure the cleanliness of materials, so as to achieve high stability and high operation efficiency and ensure worry free production capacity. The st special screw runner design of exhaust extruder can improve the stability and yield of finished products.As for the welding of PFA pipe fitting series products, we use the PFA welding machine with the latest technology in Japan, which has the industry-leading advantage in the melting depth of the welding end face and the melting balance of the left and right end faces, and make the end faces bond perfectly with the thermal radiation technology.



| 产品规格选择编码<br>PRODUCT SPECIFICATION SELECTION CODE |                            |      |      |      |     |        |        |
|--|----------------------------|------|------|------|-----|--------|--------|
| 规格   | 三通                         | 弯头   | 圆弧弯头 | 大小头  | 四通  |        |        |
| 编码   | T                          | E    | L    | R    | C   |        |        |
| 产品尺寸选择编码<br>PRODUCT SIZE SELECTION CODE          |                            |      |      |      |     |        |        |
| 尺寸   | 1/4"                       | 3/8" | 1/2" | 3/4" | 1"  | 1-1/4" | 1-1/2" |
| 编码   | 4T                         | 6T   | 8T   | 12T  | 16T | 18T    | 20T    |
| 零件编号选择示例<br>PART NUMBER SELECTION EXAMPLE        |                            |      |      |      |     |        |        |
| 产品规格   | 焊接三通变径管 3/8" x 1/4" x 3/8" |      |      |      |     |        |        |
| 零件编号   | GPT6T-4T-6T-PFA            |      |      |      |     |        |        |

| Inch size (mm)                     |          |                 |           |          |            |
|------------------------------------|----------|-----------------|-----------|----------|------------|
| O.D.X.I.D                          | Thicness | Length          | Tolerance |          |            |
|                                    |          |                 | O.D.      | Thicness | Length     |
| 1/8" x 0.086<br>(3.18 x 2.18)      | 0.5      | 3m<br>or<br>20m | ±0.10     | ±0.05    | +2%<br>- 0 |
| 1/4" x 5/32"<br>(6.35 x 3.95)      | 1.2      |                 |           |          |            |
| 1/4" x 0.171"<br>(6.35 x 4.35)     | 1.0      |                 |           |          |            |
| 3/8" x 1/4"<br>(9.53 x 6.33)       | 1.6      |                 | ±0.12     | ±0.10    |            |
| 3/8" x 0.296"<br>(9.53 x 7.53)     | 1.0      |                 |           |          |            |
| 1/2" x 3/8"<br>(12.7 x 9.5)        | 1.6      |                 |           |          |            |
| 3/4" x 5/8"<br>(19 x 15.8)         | 1.6      |                 | ±0.20     |          |            |
| 1" x 7/8"<br>(25.4 x 22.2)         | 1.6      |                 |           |          |            |
| 1-1/4" x 1-1/10"<br>(31.8 x 28.0)  | 1.9      | 3m              | ±0.25     | ±0.15    |            |
| 1-1/2" x 1-21/64"<br>(38.1 x 33.7) | 2.2      |                 |           |          |            |

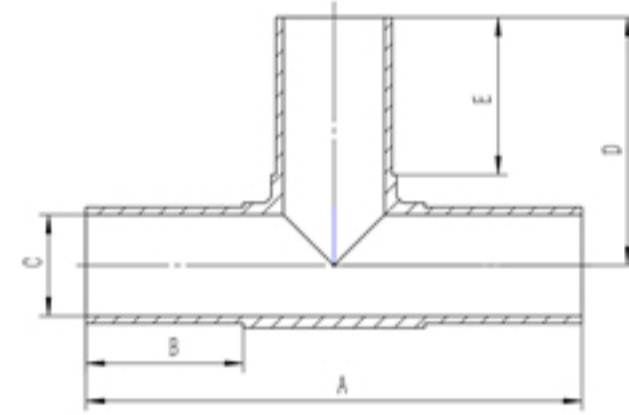
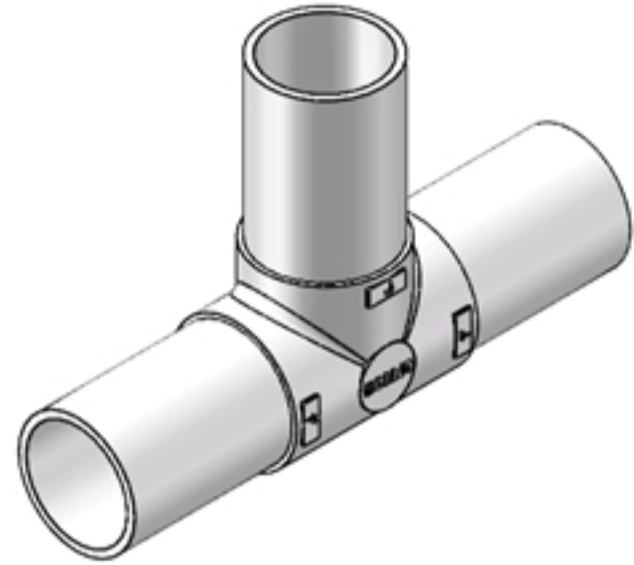


产品目录  
PRODUCT CATALOG

- 01 焊接三通管 WELDED TEE 5
- 02 焊接三通变径管 WELDED TEE REDUCER 6
- 03 焊接四通管 WELDED CROSS 7
- 04 焊接四通变径管 WELDING CROSS REDUCER 8
- 05 焊接弯头管 WELDED ELBOW PIPE 9
- 06 焊接变径弯头管 WELDED ELBOW PIPE 10
- 07 焊接变径管 WELDED REDUCER 11
- 08 焊接圆弧弯头管 WELDED ARC ELBOW PIPE 12

**焊接三通管**

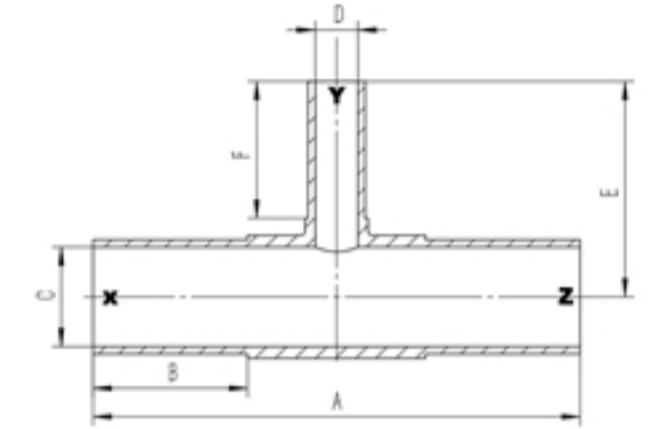
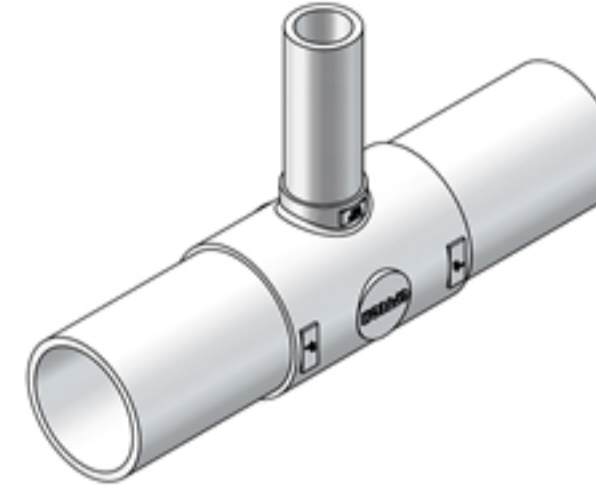
WELDED TEE



| 零件编号        | 规格尺寸   | A     | B    | C    | D     | E    |
|-------------|--------|-------|------|------|-------|------|
| GPT-4T-PFA  | 1/4"   | 48.6  | 18.5 | 4.35 | 24.3  | 18.5 |
| GPT-6T-PFA  | 3/8"   | 54    | 19   | 6.33 | 25.9  | 17.9 |
| GPT-8T-PFA  | 1/2"   | 81    | 30   | 9.5  | 40.5  | 30   |
| GPT-12T-PFA | 3/4"   | 103.1 | 37   | 15.8 | 51.55 | 37   |
| GPT-16T-PFA | 1"     | 108.7 | 34.5 | 22.2 | 54.35 | 34.5 |
| GPT-18T-PFA | 1-1/4" | 113.5 | 38.1 | 28   | 51.05 | 32.4 |
| GPT-20T-PFA | 1-1/2" | 113.5 | 34.1 | 33.7 | 56.75 | 34.1 |

**焊接三通变径管**

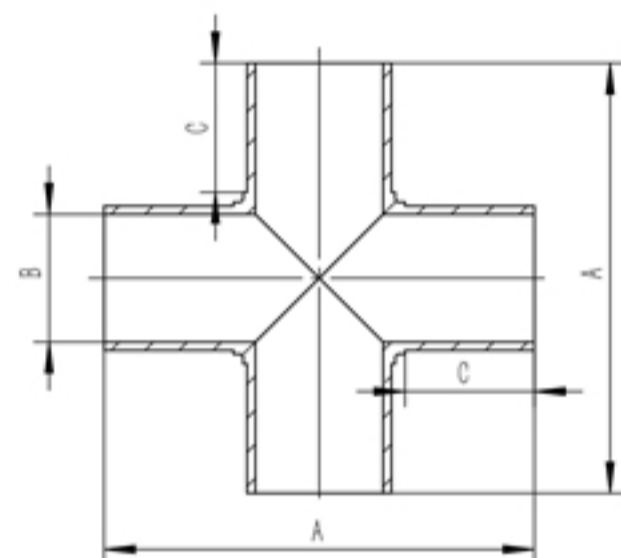
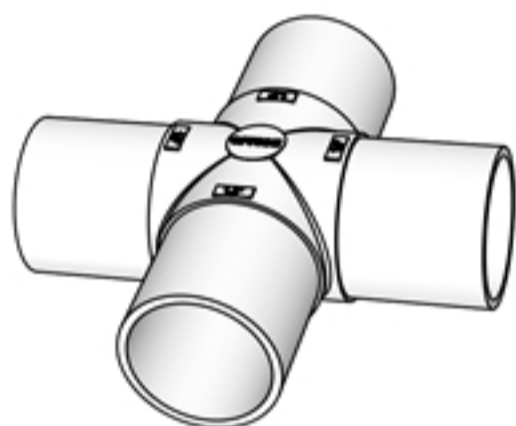
WELDED TEE REDUCER



| 零件编号               | 尺寸-X   | 尺寸-Y   | 尺寸-Z   | A     | B    | C    | D    | E     | F    |
|--------------------|--------|--------|--------|-------|------|------|------|-------|------|
| GPT6T-4T-6T-PFA    | 3/8"   | 1/4"   | 3/8"   | 54    | 19   | 6.33 | 4.35 | 22.9  | 14.5 |
| GPT8T-4T-8T-PFA    | 1/2"   | 1/4"   | 1/2"   | 81    | 30   | 9.5  | 4.35 | 28.2  | 18.7 |
| GPT8T-6T-8T-PFA    | 1/2"   | 3/8"   | 1/2"   | 81    | 30   | 9.5  | 6.33 | 28.2  | 18.7 |
| GPT12T-4T-12T-PFA  | 3/4"   | 1/4"   | 3/4"   | 103.1 | 37   | 15.8 | 4.35 | 38.6  | 24   |
| GPT12T-6T-12T-PFA  | 3/4"   | 3/8"   | 3/4"   | 103.1 | 37   | 15.8 | 6.33 | 48    | 33.4 |
| GPT12T-8T-12T-PFA  | 3/4"   | 1/2"   | 3/4"   | 103.1 | 37   | 15.8 | 9.5  | 48    | 33.4 |
| GPT16T-8T-16T-PFA  | 1"     | 1/2"   | 1"     | 108.7 | 34.5 | 22.2 | 9.5  | 48    | 30.5 |
| GPT16T-4T-16T-PFA  | 1"     | 1/4"   | 1"     | 108.7 | 34.5 | 22.2 | 4.35 | 42.5  | 25   |
| GPT16T-6T-16T-PFA  | 1"     | 3/8"   | 1"     | 108.7 | 34.5 | 22.2 | 6.33 | 42.5  | 25   |
| GPT16T-12T-16T-PFA | 1"     | 3/4"   | 1"     | 108.7 | 34.5 | 22.2 | 15.8 | 47    | 30   |
| GPT18T-4T-18T-PFA  | 1-1/4" | 1/4"   | 1-1/4" | 113.5 | 38.1 | 28   | 4.35 | 40    | 19   |
| GPT18T-8T-18T-PFA  | 1-1/4" | 1/2"   | 1-1/4" | 113.5 | 38.1 | 28   | 9.5  | 53    | 30   |
| GPT18T-12T-18T-PFA | 1-1/4" | 3/4"   | 1-1/4" | 113.5 | 38.1 | 28   | 15.8 | 61.1  | 38.1 |
| GPT18T-16T-18T-PFA | 1-1/4" | 1"     | 1-1/4" | 113.5 | 38.1 | 28   | 22.2 | 56.9  | 38.1 |
| GPT20T-16T-20T-PFA | 1-1/2" | 1"     | 1-1/2" | 113.5 | 34.1 | 33.7 | 22.2 | 56.95 | 34.3 |
| GPT20T-18T-20T-PFA | 1-1/2" | 1-1/4" | 1-1/2" | 113.5 | 34.1 | 33.7 | 28   | 60.7  | 34.3 |

### 焊接四通管

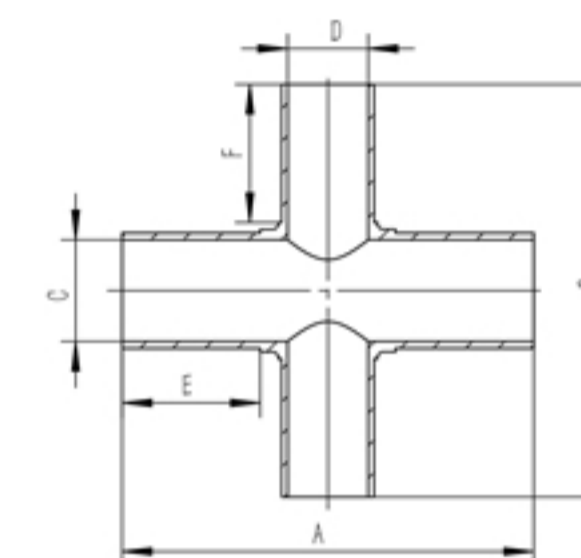
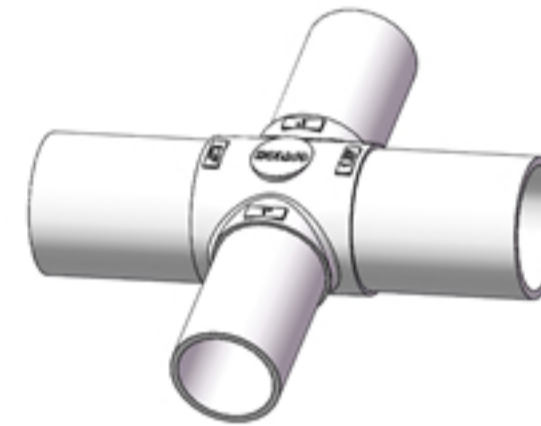
WELDED CROSS



| 零件编号        | 规格尺寸   | A    | B    | C    |
|-------------|--------|------|------|------|
| GPC-4T-PFA  | 1/4"   | 44.5 | 4.35 | 16.5 |
| GPC-6T-PFA  | 3/8"   | 50   | 6.33 | 17   |
| GPC-8T-PFA  | 1/2"   | 50   | 9.5  | 15.5 |
| GPC-12T-PFA | 3/4"   | 50.8 | 15.8 | 12.7 |
| GPC-16T-PFA | 1"     | 60   | 22.2 | 12.7 |
| GPC-20T-PFA | 1-1/4" | 70   | 28   | 16   |

### 焊接四通变径管

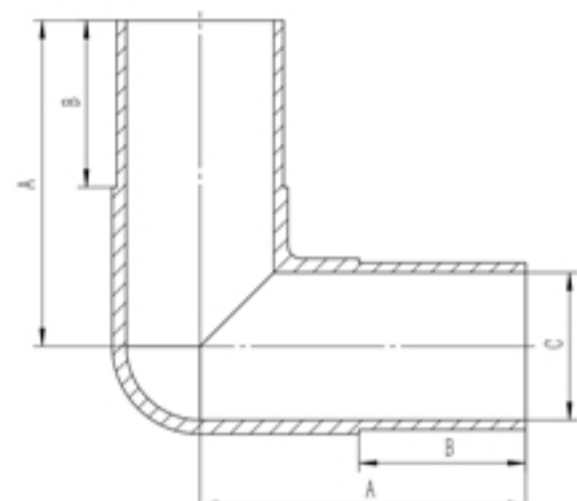
WELDING CROSS REDUCER



| 零件编号            | 规格尺寸        | A    | B    | C    | D    | E    | F    |
|-----------------|-------------|------|------|------|------|------|------|
| GPC-6T-4T-PFA   | 3/8" x 1/4" | 50   | 50   | 6.33 | 4.35 | 19   | 18   |
| GPC-8T-6T-PFA   | 1/2" x 3/8" | 50   | 50   | 9.5  | 6.33 | 17.5 | 16   |
| GPC-12T-8T-PFA  | 3/4" x 1/2" | 50.8 | 50.8 | 15.8 | 9.5  | 16   | 12.7 |
| GPC-16T-12T-PFA | 1" x 3/4"   | 60   | 56   | 22.2 | 15.8 | 15.5 | 12.3 |

焊接弯头管

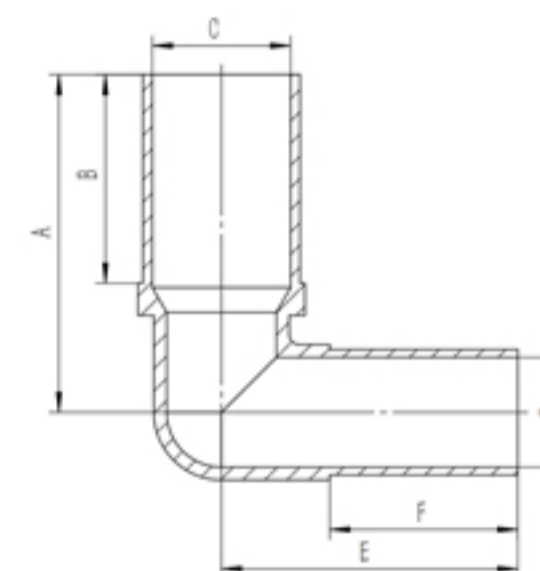
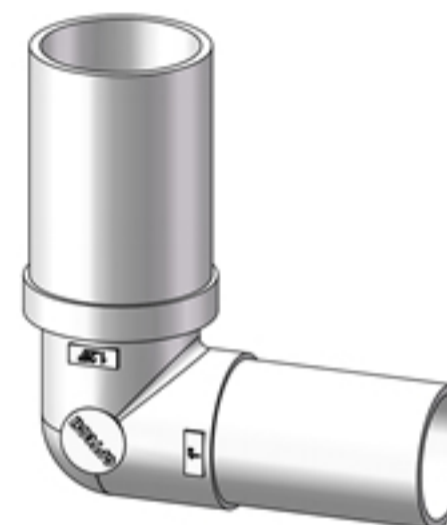
WELDED ELBOW PIPE



| 零件编号        | 规格尺寸   | A    | B    | C    |
|-------------|--------|------|------|------|
| GPE-4T-PFA  | 1/4"   | 25.7 | 19   | 4.35 |
| GPE-6T-PFA  | 3/8"   | 35.3 | 25.4 | 6.33 |
| GPE-8T-PFA  | 1/2"   | 42.7 | 30   | 9.5  |
| GPE-12T-PFA | 3/4"   | 47.5 | 33   | 15.8 |
| GPE-16T-PFA | 1"     | 58.6 | 34.5 | 22.2 |
| GPE-18T-PFA | 1-1/4" | 68.3 | 38.1 | 28   |
| GPE-20T-PFA | 1-1/2" | 74.4 | 38.1 | 33.7 |

焊接变径弯头管

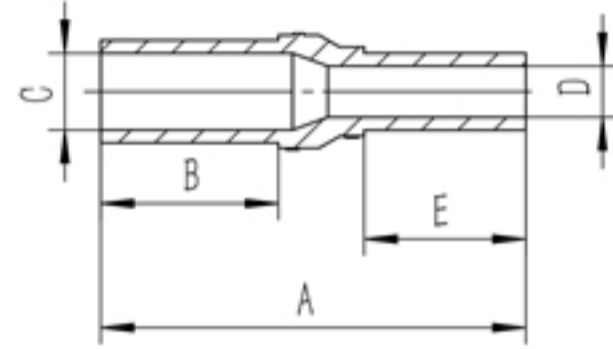
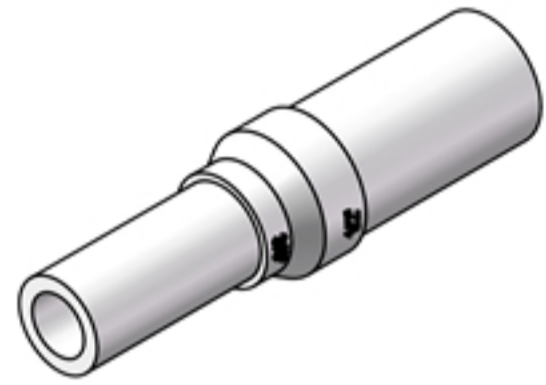
WELDING REDUCER ELBOW PIPE



| 零件编号            | 规格尺寸           | A    | B    | C    | D    | E    | F    |
|-----------------|----------------|------|------|------|------|------|------|
| GPE-6T-4T-PFA   | 3/8" X1/4"     | 34.6 | 25.4 | 6.33 | 4.35 | 25.7 | 19   |
| GPE-8T-4T-PFA   | 1/2" X1/4"     | 42.7 | 29.5 | 9.5  | 4.35 | 34.2 | 20.8 |
| GPE-8T-6T-PFA   | 1/2" X3/8"     | 42.7 | 29.5 | 9.5  | 6.33 | 36   | 22.9 |
| GPE-12T-8T-PFA  | 3/4" X1/2"     | 47.5 | 30   | 15.8 | 9.5  | 42.7 | 30   |
| GPE-16T-8T-PFA  | 1" X1/2"       | 58.7 | 34.5 | 22.2 | 9.5  | 42.7 | 30   |
| GPE-16T-12T-PFA | 1" X3/4"       | 58.7 | 34.5 | 22.2 | 15.8 | 47.5 | 33   |
| GPE-16T-18T-PFA | 1" X1-1/4"     | 68.3 | 42.2 | 28   | 22.2 | 60   | 38.1 |
| GPE-16T-20T-PFA | 1" X1-1/2"     | 69.1 | 42.2 | 33.7 | 22.2 | 60   | 38.1 |
| GPE-20T-18T-PFA | 1-1/2" X1-1/4" | 74.4 | 43.2 | 33.7 | 28   | 64.5 | 38.1 |

焊接变径管

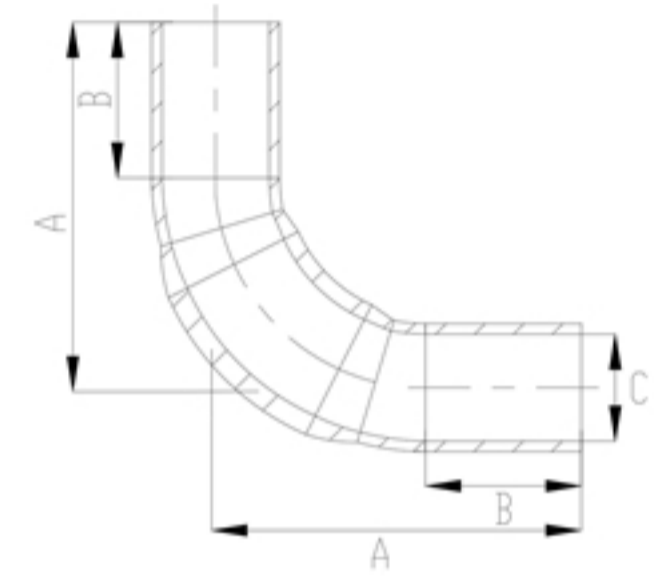
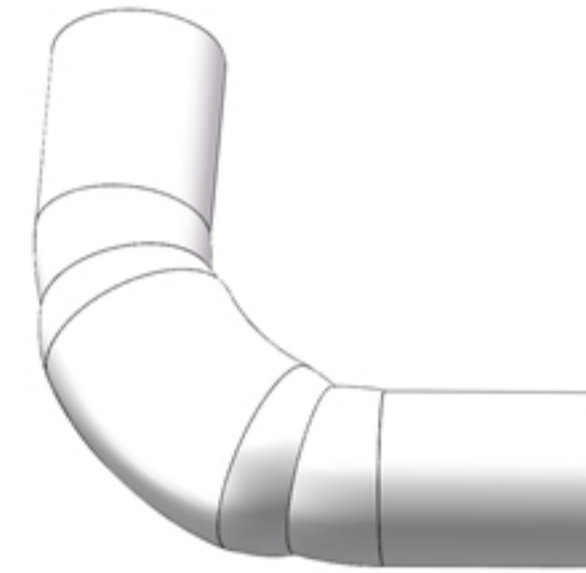
WELDED REDUCER



| 零件编号            | 规格尺寸           | A    | B    | C    | D    | E    |
|-----------------|----------------|------|------|------|------|------|
| GPR-6T-4T-PFA   | 3/8" x 1/4"    | 48.5 | 19   | 6.33 | 4.35 | 19   |
| GPR-8T-4T-PFA   | 1/2" X1/4"     | 52.6 | 22   | 9.5  | 4.35 | 19   |
| GPR-8T-6T-PFA   | 1/2" X3/8"     | 52.6 | 22   | 9.5  | 6.33 | 20   |
| GPR-12T-4T-PFA  | 3/4" X1/4"     | 83.3 | 34.5 | 15.8 | 4.35 | 25.4 |
| GPR-12T-6T-PFA  | 3/4" X3/8"     | 83.3 | 34.5 | 15.8 | 6.33 | 25.4 |
| GPR-12T-8T-PFA  | 3/4" X1/2"     | 83.3 | 34.5 | 15.8 | 9.5  | 30   |
| GPR-16T-4T-PFA  | 1" X1/4"       | 92.2 | 38   | 22.2 | 4.35 | 24.6 |
| GPR-16T-6T-PFA  | 1" X3/8"       | 92.2 | 38   | 22.2 | 6.33 | 24.6 |
| GPR-16T-8T-PFA  | 1" X1/2"       | 92.2 | 38   | 22.2 | 9.5  | 30   |
| GPR-16T-12T-PFA | 1" X3/4"       | 98.6 | 38   | 22.2 | 15.8 | 31   |
| GPR-18T-16T-PFA | 1-1/4" X1"     | 98.6 | 38   | 28   | 22.2 | 38   |
| GPR-20T-16T-PFA | 1-1/2" X1"     | 98.6 | 38   | 33.7 | 22.2 | 25.9 |
| GPR-18T-20T-PFA | 1-1/4" X1-1/2" | 98.6 | 38   | 33.7 | 28   | 38   |

焊接圆弧弯头管

WELDED ARC ELBOW PIPE



| 零件编号        | 规格尺寸 | A    | B    | C    |
|-------------|------|------|------|------|
| GPL-4T-PFA  | 1/4" | 35.8 | 15.2 | 4.35 |
| GPL-6T-PFA  | 3/8" | 40.9 | 17.8 | 6.33 |
| GPL-8T-PFA  | 1/2" | 45.5 | 20.3 | 9.5  |
| GPL-12T-PFA | 3/4" | 55.1 | 33.4 | 15.8 |
| GPL-16T-PFA | 1"   | 68   | 23.4 | 22.2 |